

PRAVEG'S TOURISM ONE

Published by PRAVEG COMMUNICATIONS LIMITED / www.praveg.com
(Formerly known as PRAVEG COMMUNICATIONS PVT. LTD.)

June 2020

Vol. : 5 | Issue : 10 | Pages : 44 | ₹ 200 | RNI Regd. No. GUJENG/2015/70098

A high-end monthly magazine



Exclusive Guide Tourist Attractions In & Around Statue of Unity

Tourists travel to the Wonders,
Travellers stay back & experience them!



200
LUXURIOUS TENTS

Packages starting
from ₹3,000 p.p.

INCLUSIONS

Statue of Unity Ticket
Sardar Sarovar Dam View Point
Valley of Flowers
All meals by Crowne Plaza



**TENT CITY
NARMADA**

THE LUXURIOUS NATURE RESORT



For Booking:

72 40 40 40 40

www.tentcitynarmada.com

For Trade Enquiry:

99 09 00 12 57

info@tentcitynarmada.com

RESORT: Dyke 3, Sardar Sarovar Dam Site, Kevadiya - 393151, Dist. Narmada, Gujarat, India

India's Pride



With Statue of Unity, India just made entry into the club of the tallest statues in the World. Statues are the finest architectural prowess since the time known or unknown. These extraordinary works of art ranging from ancient, medieval, or modern times, quite subtly manifest the best of the era. Be it the rock-cut pieces from prehistoric eras or some of the finest yet giant monolithic pieces from the medieval times, these statues around the world have fascinated tourists and archaeologists the most.

Ever since its inauguration in 2018, Statue of Unity has achieved much recognition. Be it in TIME magazine or as an “8th Wonder of the World” in Shanghai Cooperation Organization List. Almost 10 million foreign tourists visited India in 2019 to visit Statue of Unity.

This edition of Praveg's Tourism One is dedicated to the unparalleled Pride of India and Gujarat – Statue of Unity and all you wanted to know about its recently added attractions in details.

Read on!

PRAVEG'S TOURISM ONE

June 2020



Praveg Communications Limited

(Formerly known as PRAVEG COMMUNICATIONS PVT. LTD.)

102, Shanti Arcade, 132ft Ring Road,
Naranpura, Ahmedabad 380013.

Tel.: +91-79-27496737, 99251 71538

e: tourismone@praveg.com

www.praveg.com

Download an e-copy of Tourism One from
www.praveg.com

Editorial Team

Prolina Barada

Priyanka Desai

Design Team

Mahesh Patel

Yagnesh Bhavsar

Vipul Gadhavi

Himanshu Nayak

DISCLAIMER: All information in Praveg's TOURISM ONE is derived from sources we consider reliable. It is passed on to our readers without any responsibility on our part. All images are copyrighted by their respective owners unless otherwise stated. Opinions/views expressed by third parties are not necessarily shared by us. Material appearing in the magazine cannot be reproduced, whether in part(s) or in whole, without prior permission.

Be a part of Praveg's Tourism One:

Share with us some enthusiastic inputs like photographs, essays or anything related to tourism.

Have some suggestions for us?

Go ahead and send us your ideas, valuable opinions or topics you would like to see more coverage on.

FOR SUBSCRIPTION QUERIES, CONTACT:

tourismone@praveg.com



Printed, Published by PARASKUMAR M. PATEL on Behalf of PRAVEG COMMUNICATIONS PVT LTD and **Printed** LE GRIFFE OFFSET PVT.LTD 3, Lower Ground Floor, Popular House, Near Income Tax, Ashram Road, Ahmedabad and **Published** from 102, Shanti Arcade, 132 ft Ring Road, Naranpura, Ahmedabad-380013, **Editor:** PARASKUMAR M. PATEL.

Contents

Incredible India

Statue of Unity

...pg 4

Vishwa Van

...pg 6

Valley of Flowers

...pg 8

Cactus Garden

...pg 10

Butterfly Garden

...pg 12

Ekta Nursery

...pg 14

River Rafting

...pg 16

Nauka Vihar

...pg 18

Children Nutrition Park

...pg 20

Glow Garden

...pg 22

Tent City Narmada

...pg 24

Arogya Van & Wellness Centre

...pg 26

Zarvani Waterfall

...pg 28

Jungle Safari

...pg 30

Dino Trail

...pg 32

Sardar Sarovar Dam

...pg 34

Zarwani & Khalwani Cycling Tours

...pg 36

Ekta Mall & Souvenir Shop

...pg 38

Khalwani Eco Tourism

...pg 38

Shoolpaneshwar Temple

...pg 39

Nilkanthdham Swaminarayan

Temple, Poicha

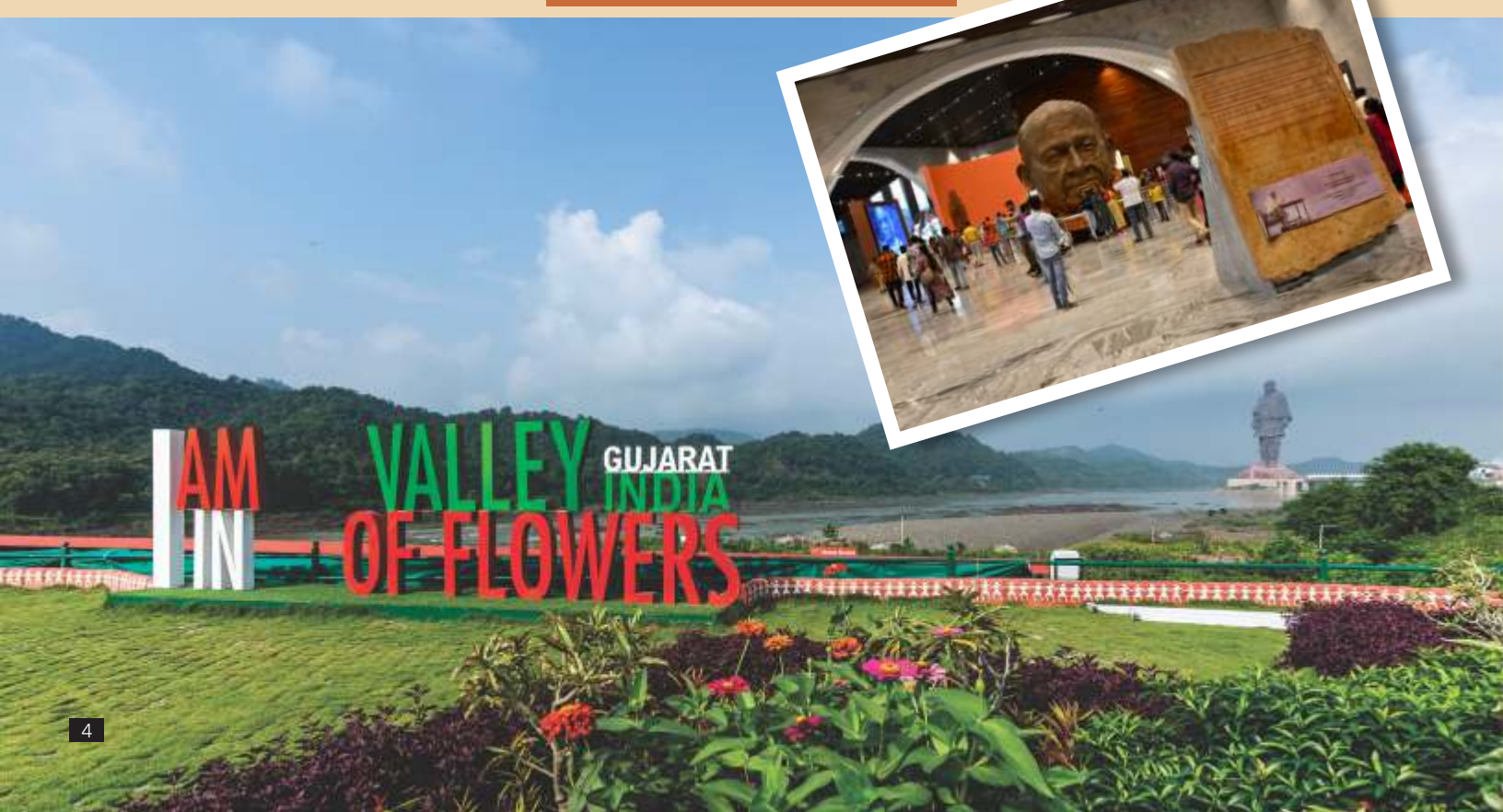
...pg 39



Statue of Unity

STATUE OF UNITY

- World's tallest statue of Independent India's first Deputy Prime Minister & Home Minister **Sardar Vallabhbhai Patel** situated on the bank of river Narmada on Sadhu Bet Island
- Stands at 182 meters (597 ft.) height, a notch above the rest
- Inaugurated by honorable Prime Minister Shri Narendra Modi on 143rd anniversary of Sardar Vallabhbhai Patel in October 2018
- There are two elevators, one each on both sides of leg of Statue. Both of them are a high speed elevator that takes approx 33 sec. from 58 meters till 153 meters where viewing gallery is located. Each elevator has a holding capacity of 20 people at a time.
- Viewing gallery is located at chest level of the statue. Front side of viewing gallery is facing 'Sardar Sarovar Dam' that is at an approx distance of 3.2 km from Statue of Unity and the back side of the viewing gallery is facing Kevadia Colony, which is located at an approx distance of 5.6 km.
- Visiting hours for Statue of Unity is from morning 08:00AM to 06:00PM. Tickets are available online on website of Statue of Unity www.soutickets.in. Tickets are available in different slots that are of every two hours.
- **Types of tickets available:**
 - Entry Ticket – Rs. 150/-
 - Regular ticket for Viewing Gallery – Rs. 380/-
 - Express ticket for Viewing Gallery – Rs. 1030/-
 - Foreign Nationality tickets for Viewing Gallery –Rs. 1500/-
 - Kids (04 years – 15 years) tickets for Viewing Gallery Rs. 230/-





1

Vishwa Van-A Global Forest

- Vishwa Van is a celebration of role of forests for the existence of all life forms on earth.
- Spread in an area of 2 hectares, the Global Forest signifies a unique theme of unity in biodiversity with herbs, shrubs and trees native to all seven continents.
- Those interested in exploring about biogeography – the study of distribution of species and ecosystems in geographic space, this is the perfect place to be.
- The forest hosts some of the unique trees like
 - Schefflera Actinophylla – the Octopus Tree, Umbrella Tree from the tropical rainforests of Australia,
 - Dracaena draco – Canary Islands Dragon Tree, a North African species which is classified as 'Vulnerable' in ICUN red list of threatened species,
 - Cerbera odollam – Suicide Tree, a native of India and other parts of Southern Asia grows preferentially in coastal salt swamps and in marshy areas,
 - Lagerstroemia speciosa – Pride of India, a native to tropical Southern Asia is one of the most outstanding summer bloomers,
 - Pachira aquatic – Guiana Chestnut, Money Tree, a tropical wetland tree is a native to central and south America,
 - Nolina bigelovii – Bigelow's Nolina, Beargrass, a native to the Southernwestern United States, California and northwest Mexico,
 - Juniperus chinensis – Chinese Juniper, a native of northeast Asia

grows in China, Mongolia, Japan, Korea and the southeast of Russia,

- Equisetum hyemale – Rough Horsetail, Snake Grass, a perennial fern that is native to North America, Europe, and Northern Asia,
- Adansonia digitata – Baobab, Monkey – bread Tree, an iconic of the African continent a majestic baobab tree,

- Couroupita guianensis – Cannonball Tree, a deciduous tree native to the rainforests of central and South America,
- Entry fee at Vishwa Van is Rs. 30.
- It is opened from morning 08:00 AM to 11:00 PM
- A trained tour guides are available at venue for guiding the visitors

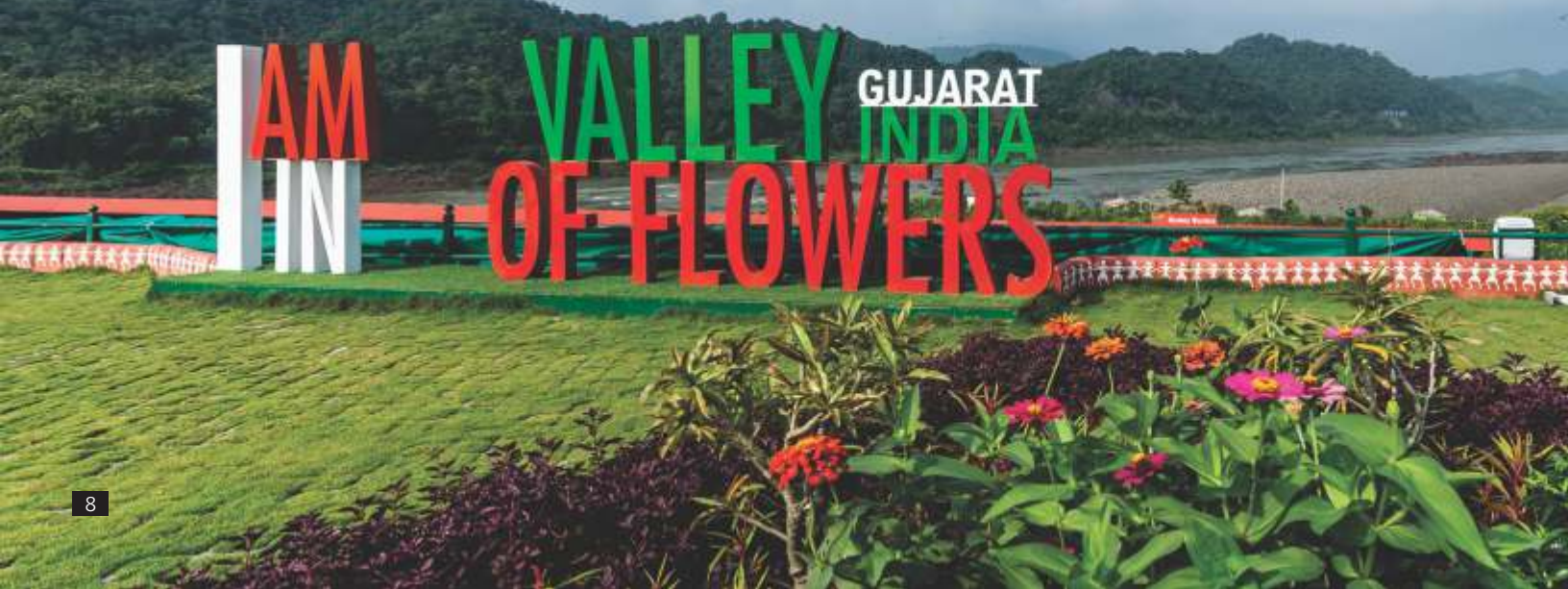




2

Valley of Flowers – Bharat Van

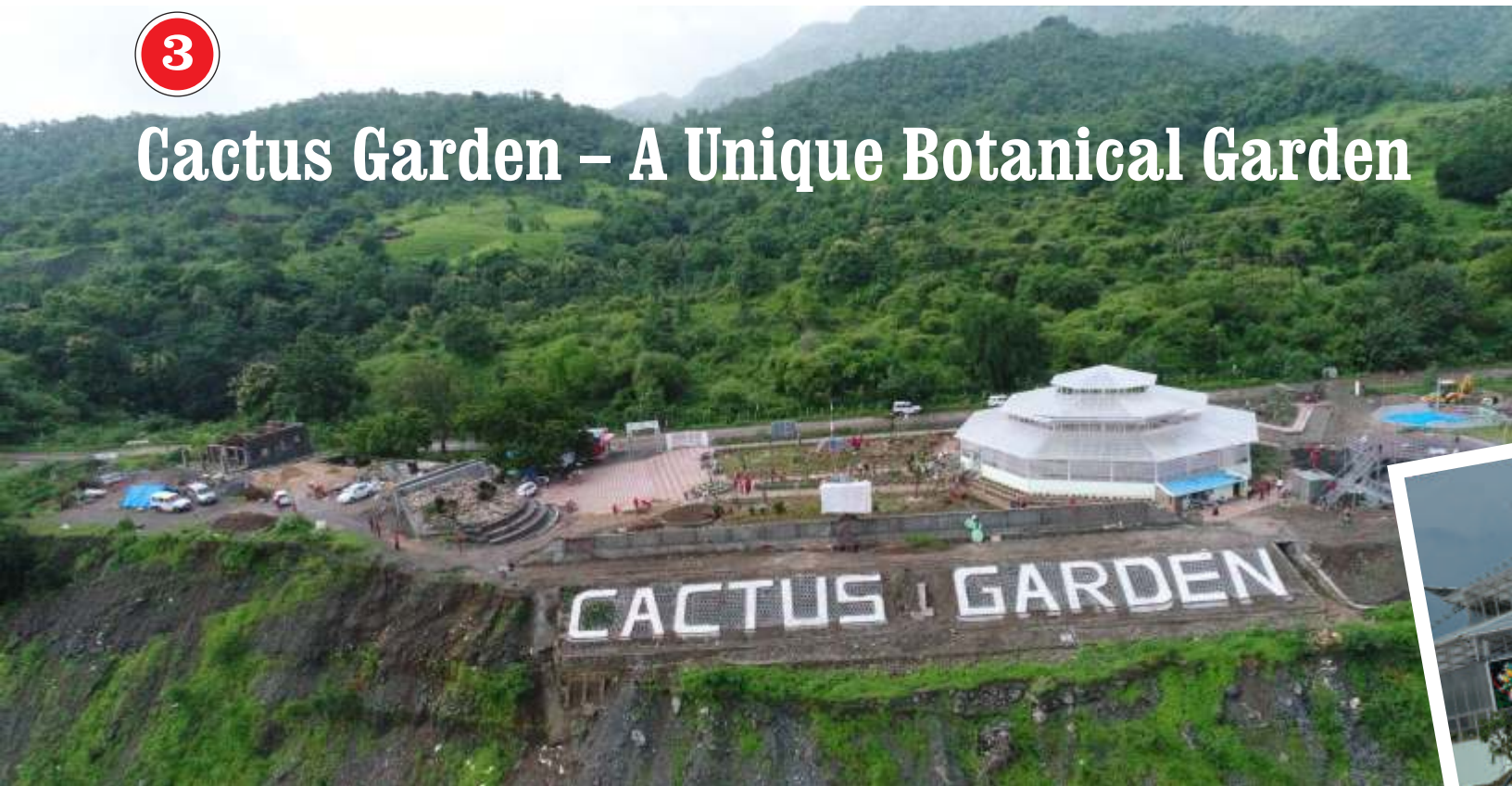
- 'Valley of Flowers' also known as Bharat Van is spread across 24 acres of land.
- A haven for visitors who love to admire colourful flowering plants along the bank of holy River Narmada.
- The flower plantation resembles a rainbow.
- More than 300 types of flowers are grown in this garden.
- A right blend of ornamental flowers, trees, shrubs, herbs, climbers and creepers are planted along with various shade of foliage which forms the green cover in this area.
- The amalgamation of these species makes this small area enchanting, flamboyant and intriguing.
- It is open for tourists from 08:00 AM to 06:00 PM.
- There is no entry fee as of now.





3

Cactus Garden – A Unique Botanical Garden



- Exhibits a huge variety of cacti and succulents
- Offers an experience of the desert ecosystem in the midst of a landmass entrenched in aquatic surrounding
- 20 - 25 acres of open land consists of around 6 lakhs plants of 450 national and international species
- Open cactus garden is situated near Sardar Sarovar Dam. It has the best view of Dam in entire kevadiya.
- 25% of the World's cactus and succulents species can be seen here representing 17 countries around the world with about 2,50,000 flowering plants, 1,90,000 cactus, 1,60,000 succulents
- Other attractions at the garden are dome, selfie point and souvenir shop.
- Timings of Cactus Garden is from 08:00 AM to 06:00 PM
- Entry fee is Rs. 30 per person.





4

Butterfly Garden – Assortment of Flying Jewels

- More than 70 species of butterflies in a garden that covers 10 acres of areas with 150 species of nectar plants and larval host plants
- The Butterfly Garden has been developed in a way to create an environment that attracts butterflies and give them a habitat to proliferate.
- Since the butterflies feed on the nectar of flowers, there are hundreds of flowering plants that will provide them with the food.
- There are also suitable places for them to lay eggs and host plants for caterpillars to thrive.
- Explore different species of butterfly that inhabitant in garden, identify the plant species, learn about their unique features, observe the preference of each species for its specific nectar plant and larval host plant, look for the species gathering around the puddling area and certain sap/alkaloid producing plants are things-to-do while visiting Butterfly Garden.
- A Selfie Point here has the world's tallest statue in its background.
- Timings of Butterfly Garden are 08:00 AM to 06:00 PM.
- Ticket of Cactus Garden includes the visit of Butterfly Garden as well.
- Best season to visit Butterfly Garden is during the monsoon.
- Best time to visit Butterfly Garden is during morning hours (from 08:00 AM to 11:30 AM) and evening hours (after 04:30 PM).







Ekta Nursery–A Wide Variety of Plants

- Spread across approx 4 acres of land
- There are nearly 54 species and 5,00,000 plants at Ekta Nursery.
- Visitors can see live making of Bamboo Crafts, Areca Leaf Utensils and Organic Post here.
 - Bamboo Crafts: Be a part of the cause, save the environment by being a conscious consumer.
 - Areca Leaf Utensils: They are biodegradable and eco -friendly products made from the shaded leaves of areca palm trees.
 - Organic Pots: Forget the luxury and immerse yourself in making environment friendly biodegradable pots.
- An Apiary has been established to exhibit and highlight the role of honey bees, which not only provide us with honey but have a remarkable role to play in eco system as pollinators.
- Kapo tree is also found here, cotton from this tree is used in making bullet proof jackets.
- Souvenir shops have been made and being run by Gujarat Forest Department Corporation and Cottages & Rural Industries Department.
- A cafeteria has been set to cater the tourists with tribal delicacies, especially the herbal tribal tea – a unique beverage of this region.
- Entry fee for Ekta Nursery is Rs. 30/-
- Timings of Ekta Nursery is from 10:00 AM to 06:00 PM.



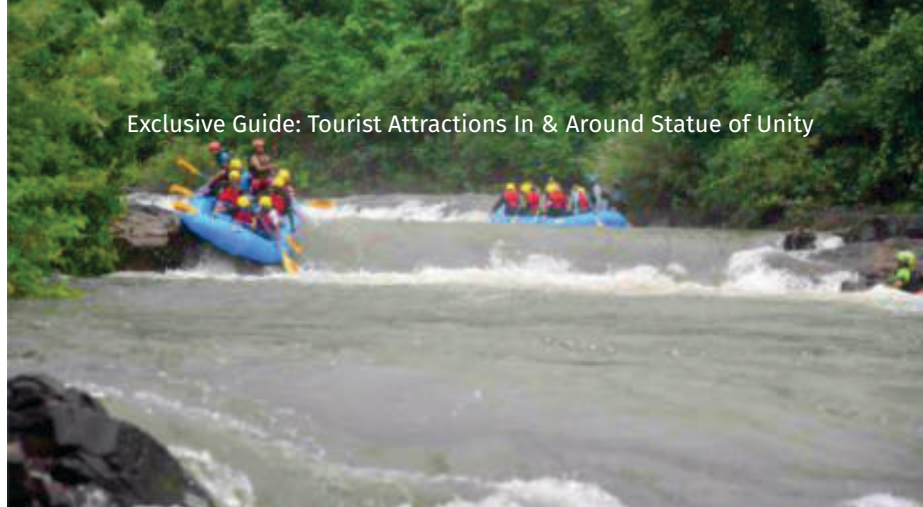




6

River Rafting – An Enthralling Sport Activity





- Narmada – the largest west flowing river in India, which is also the lifeline of millions, is ushered in the thrilling experience for the enthusiasts who can enjoy river raft of 4.5 kms.
- It stretches with whirlpool, rapids and many turns, which provides an exciting and unforgettable experience for the first time in Gujarat.
- Approx rafting time is of 45 minutes to 60 minutes.
- Two types of rafts are available that consist of 8 riders and 1 guide (16-ft raft) and second type is of 6 riders and 1 guide (14-ft raft).
- There are 6 rapids through the channels of Narmada which embraces the thrills of rafting.
- Pick-up timings during summers are from 09:30AM to 04:30 PM and during winters, it is 10:30 AM to 03:30 PM.
- Cost per person for River Rafting is Rs. 1000/-



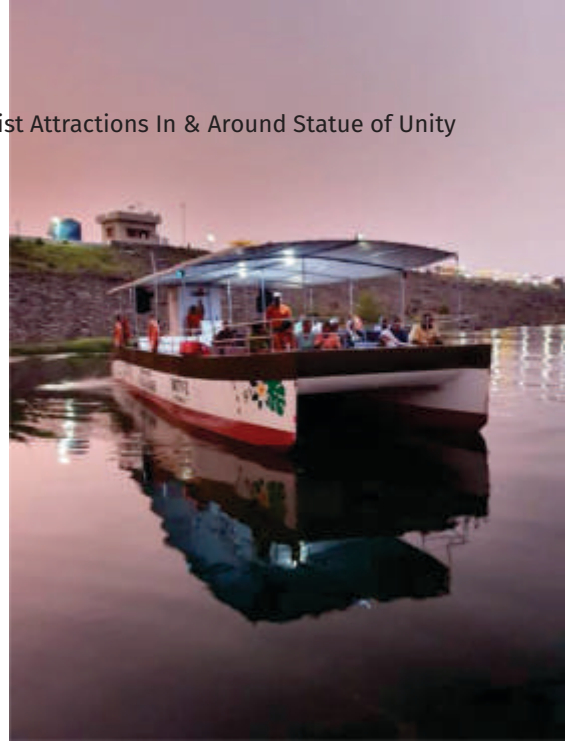


7

Nauka Vihar – An Eco-tourism Activity

- Boat ride to enjoy the pristine nature near Panchmuli Lake in Kevadia
- The route is covered with appealing and rich flora and fauna.
- It also offers an opportunity to observe innumerable species in their natural habitat.
- Total duration of the ride is of 45 minutes
- 8-km ride costs Rs. 290/- per person
- Boat can accommodate 35 persons at one go.
- Timings are from 09:00 AM – 05:00 PM



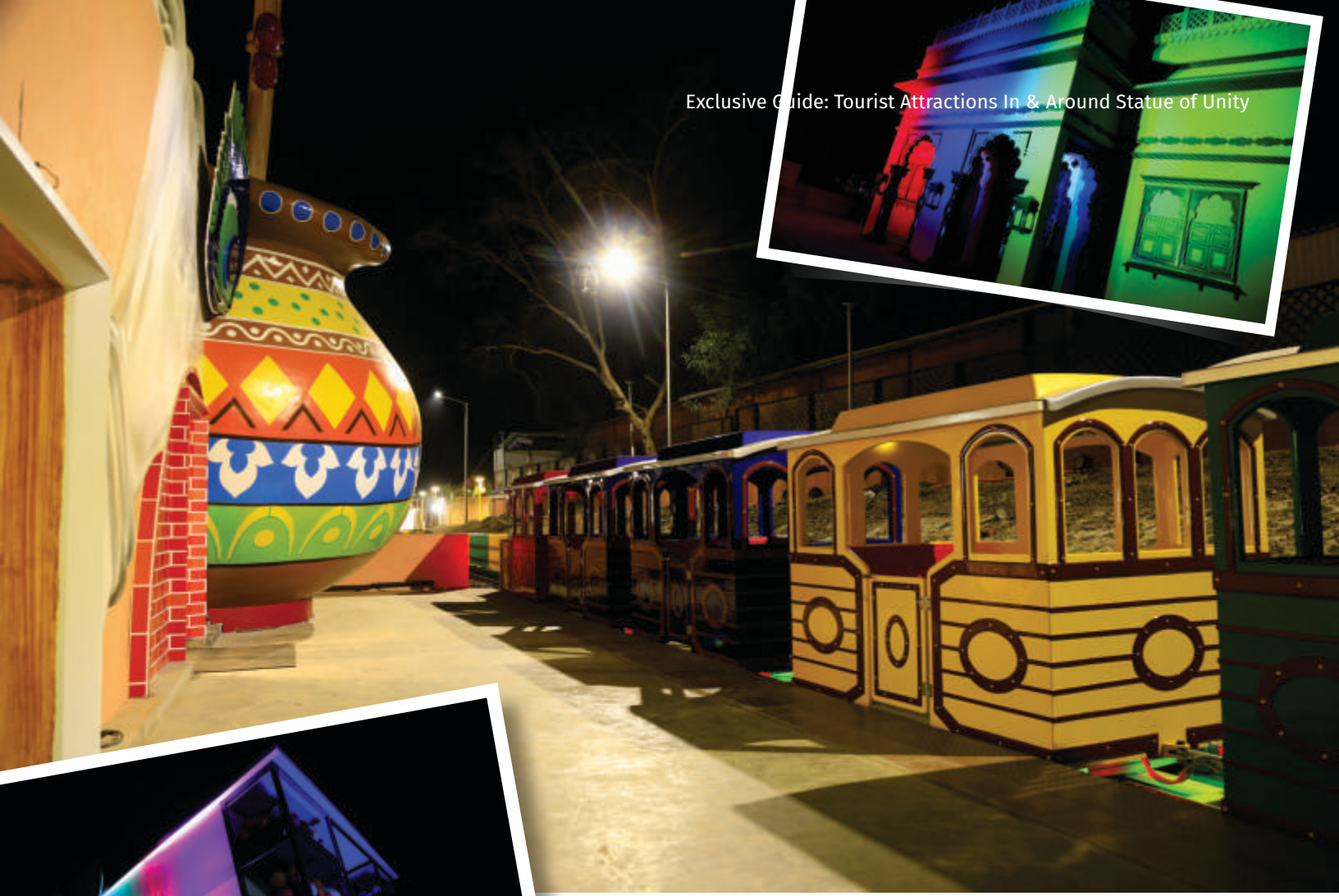


8

Children Nutrition Park – A Theme Park

- An initiative to provide massive technology-rich spectacle with high quality entertainment and vital knowledge on healthy eating and quality nutrition to the children based on the theme of “SAHI POSHAN DESH ROSHAN”
- The first-of-its-kind in India and is an attraction for children and parents, not only from India but all around the world
- Main feature in this park is Nutri Train that runs on a 600m-long track and take tourists to various stations.
- There is another attraction called ‘Mirror Maze’ building, which contains a Unity Theatre that showcases a 5D movie named ‘Bhartiya Thaali – Unity in Food Diversity’
- Nutri Hunt building and game zone are the other major attractions.
- Nutri Hut consists of super fun and engaging activities for children like a ‘Jungle Gym and Treasure Hunt’
- Game Zone comprises an exciting Zorb ball game, a cycling game and a unique football game.
- Other attraction includes selfie point for perfect photographs and a Nutri
- café that will serve the visitors only nutritious and healthy foods.
- The entry cost per person is Rs. 200 per adult and Rs. 120 for the kids below 16 years.





9

Glow Garden – A Glimmering Attraction

- To illuminate evenings around Statue of Unity with attractive and vibrant lightings, a unique theme park has been developed with a glimmering array of installation, figures and optical illusions known as “Unity Glow Garden”
- A botanical like sunflowers, tulips and also various other trees in cherry blossom colour , various animals like giraffe, white horse, rabbit and various birds like pair of pelican, duck are displayed to

welcome visitors to experience the joy of night tourism.

- There are about 33 lakhs LED lights in this theme park. Censored and walking lights amaze the visitors.
- There are 2 moon-shaped attached seats where visitors can take selfie. It has a very significant background of Statue of Unity.
- Wheat plant, beautiful platform, reception look and green carpet area are some of the eye catching

modules of this unique theme park.

- Park usually is open by 06:30 PM during summers.





10

Tent City Narmada – A Luxury Nature Resort



- A luxurious and well-appointed tented accommodation that offers close to nature experience with hills, lakes, wooden areas and pollution free air.
- Inaugurated by Honorable Prime Minister of India Shri Narendra Modi on 31st October 2018.
- Tent City Narmada is composite of accommodation, food & beverage, banqueting & conference and kids play zone.
- Accommodation:
 - 197 well-appointed and luxurious tents of different categories at affordable tariff.
 - There are Standard Non A/C Tents, Deluxe A/C Tents, Premium A/C Tents, Mini Darbaari Tents and Darbaari Tent.
- Dining Area: Dining hall with a capacity of 300 guests. Five star food complements the five star accommodation. Buffet is composite of multi-cuisine food with live counter, where food is prepared and served by chef. Live music in this hall during dinner gives an extravagant dining experience.
- Reception: A dedicated reception area to welcome the guests.
- Conference Halls: Three conference halls with varied size, facilities and arrangements to suit all types of corporate requirements. The varied conference facilities can accommodate from 50 to 1000 delegates and also offers a wide range of seating arrangements as per the requirements.
- Logistic Support: SIC (Sit in Coach) basis logistic is also part of the accommodation package of Tent City Narmada. It provides logistic support to the guests of Tent City Narmada to and from various attractions in Kevadia.
- Other facilities: Other facilities that is made available for the guests residing at Tent City Narmada is Kids Play Zone, lush green lawns with swings, cultural activity area where traditional performances are presented and performed by tribes of Narmada district, Selfie point, Toran Lounge – a VIP seating and meeting area.





11

Arogya Van & Wellness Centre–A Nature Retreat

- Arogya Van is a landscape spread over an area of about 15 acres.
- Displays a wide range of medicinal and health related plants
- Concept of Arogya Van revolves around the fact that 'Plants' play an important role in the well-being of humans
- Majorly emphasizes on yoga, ayurveda and meditation
- A giant three dimensional layout of human body named as 'Aushadh Manav' in a resting posture is a major attraction
- Each of the portions of body of 'Aushadh Manav' has the plants specific for therapeutic use in the ailment of that particular organ.
- A lotus pond is placed such that the view of 'Aushadh Manav' from the entrance plaza would be seen overlooking the lotuses above the water.
- Entry gate of Arogya Van have all twelve mudras of Surya Namaskar of Human Size.
- Digital visualization through real time showcasing "Arogya and Medicinal" plants related movies and documentaries
- To name gardens that are developed inside Arogya Van are:
 - Garden of Colours: Colourful foliage provides tons of texture and adds shape and colour to the landscape.
 - Aroma Garden: Aromatic plants are planted in the garden specifically for their distinctive smell
 - Yoga Garden: The yoga garden is a



serious stress buster, improves flexibility, builds muscle strength, perfects your posture, increases blood flow, promotes emotional health, enhances, self-awareness, lengthens attention span and improves sleep.

- Alba Garden: This garden comprises white flowers, plants and herbs creating a peaceful and

soothing ambience.

- Lutea Garden: Lutea refers to the yellow colour. This garden comprises yellow and golden colour flowers plant.
- Sacred Garden: This garden has different ficus species, which are described as sacred trees in Veda. This is the place for meditation, spiritual awakening and

celebration.

- Entry fee per person is Rs. 30/-.
- **WELLNESS CENTRE:**
 - Explore the wisdom of traditional healing in its true form at Arogyavan- Santhigiri Wellness Centre.
 - The Centre caters a holistic healthcare based on Ayurveda,



Siddha, Panchakarma, Yoga, Marma & Naturopathy to the citizens from India and abroad.

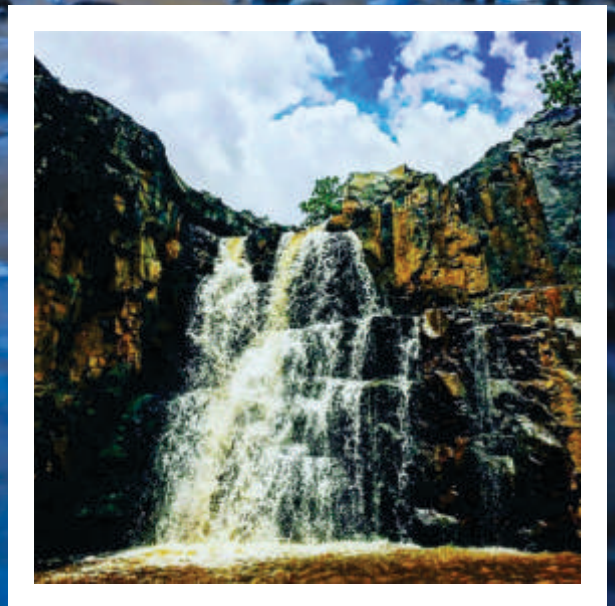
- Tourists can experience various treatments like Sirodhara, Therapeutic Yoga among many others at the Centre.
- Ayurveda & Siddha medicines are available here. Ayurvedic treatment combines products mainly derived from plants, diet, exercise and lifestyle.
- A traditional food and beverage is served here that is prepared by the tribal women.

12

Zarvani Waterfall – An Experience of its own kind

- Approx. 22 km away from Statue of Unity, a wonderful place to organize 1-day picnic
- Travelling to Zarwani waterfall will also give you one of the finest experiences with travelling through mountain range and forests on a zigzag road.
- Enjoy beautiful waterfall, amazing scenic view of waterfalls between mountains
- A place to enjoy tribal food, tea and coffee
- Best time to experience this place is during monsoon.
- Various adventure activities to indulge in like zip line, free fall device, unstable bridges, inclined log, cargo net, giant ladder, Burma loop, horizontal net among many others.
- It is recommended to pre book this adventure experience.





13

Jungle Safari – Into the Woods

- A state of art zoological park with unique collection of indigenous and exotic animals and birds from various biogeographic region of the world is located at the picturesque hills.
- This place takes visitors through an adventurous and exiting trip of watching wildlife and enjoying scenic beauty of the hills.
- The Jungle Safari covers 375 acres at seven different levels ranging from an altitude or elevation of 29 meters to 180 meters on the right bank of River Narmada.
- The park has more than 186 species of fauna covering various biomes of Africa, Australia, Asia and America.
- Visitors came also spot India's endangered species which includes the magnificent big cat such as Asiatic Lion, Royal Bengal Tiger and Leopards.
- Highlight of this place is walking through Aviary, harbouring the finest indigenous birds.
- The view will not be obstructed by the bars of the cages. There are two Aviaries housing large number of birds. These Aviaries are among the largest geodesic domes in India – Indian Aviary is 150 meters long, 50 meters wide, 15 meters high & Exotic Aviary is 125 meters long, 35 meters wide & 15 meters high.
- Exotic birds that can be found in Exotic Aviary are Macaw, Cockatoo, Pheasants, Black Swan, Grey Parrot, Cape Crowned Crane and many more colourful birds from South Africa, Australia, South East Asia, Africa and other part of the world.
- Herbivores animals such as Black Bucks, White Bucks, Spotted Deer, Sambar, Four Horns Antelopes, Chinkaras, Blue Bulls and many more can be spot in their green hilly surroundings.
- Visitors can also experience the wonderful wildlife like Giraffe, Zebra, Meer Cat, and Ostrich from Africa, Wallaby and Emu from Australia and many more animals from across the world.
- Cafeteria and Souvenir Shop are other attractions
- Per person entry fee for adult is Rs. 200/- and for kid is Rs. 120/-.





14

Dino Trail–The Ancient Past

- Not many of us know that India was once a home to number of dinosaurs from the early Triassic to the late of Cretaceous. Gujarat is one of the few states in India that contains a wealth of dinosaur fossilized remains.
- A recent excavations in the Narmada Valley has revealed that the *Rajasaurus Narmadensis*, an endemic species of Dinosaur were existing in the Narmada valley during Cretaceous period (also known as K – period). This period span between Jurassic period (145 million years ago) and Paleogene Period (66 million years ago)
- A replica of the endemic dinosaur with distinctive horn is created and exhibited for visitors.
- The replica is about three times the estimate original size. It is 75 feet in length and 25 feet in height.





15

Sardar Sarovar Dam – The World's Second Largest Dam

- At a height of 138.68 meter, Sardar Sarovar is the World's Second Largest Dam
- The lifeline of Gujarat helps in agriculture output and revenue of the region
- There are two power houses that produce and supply electricity by hydro energy providing electricity to Maharashtra, Madhya Pradesh, Rajasthan and Gujarat.
- Dam's spillway discharging capacity (30.7 lakhs cusecs) is third highest in the world. Gazenba (1.13 lac cumes) in China and Tucurri (1.0 lac cumes) in Brazil being the first two.





16

Zarwani & Khalwani Cycling Tours – A Leisure Activity



- Zip through hilly terrains and winding roads and experience aesthetic beauty of Vindhyachal and Satpuda on two wheels
- A cycling tour presents a unique way of discovering a region that is covered with a lush green mountain forests to invigorating rivulets
- On this track of moderate uphill climb and a decent ride to downhill, the entire experience will be awesome, thrilling and ecstatic.
- TOUR – DE – ZARWANI is of 22 kms of travel distance. Duration for same is 3 hours and 30 minutes.
- High standard mountain bicycles and helmets are provided during this trip.
- Facilities that are provided for rider



- during this trip are drinking water, fruits, tea, local delicacies and major meal.
- There will be one lead tour guide, one float escort and one tour escort with rider till the end of the tour.
- 20 guests per trip are allowed to participate in this tour.
- Starting point of the trip is from Shrestha Bharat Bhawan.
- Timings of the tour are 06:00 AM 09:30 AM & 12:30 PM to 04:30 PM.
- Charges of the trip are Rs. 1000 per person.

TOUR – DE – KHALWANI is a family friendly tour which would include small frame kid's cycle, Tandem cycles for couples and the regular cycles for adventure enthusiastic.

- Distance of total tour is 14 km
- Duration of the tour is 3 hrs
- Entire track offers rolling terrain that has amazing picturesque view.
- Total capacity of the trip is of 30 guests
- Rates for regular cycle are Rs. 350 (maximum capacity in one trip is 20 guests) & Tandem cycle are Rs. 550 per couple (Maximum 5 couple).
- Tour starts from Sardar Sarovar Dam's parking (View Point 1).
- Tour timings are 12:00 PM to 03:00 PM & 03:00 PM to 06:00 PM



17

Ekta Mall & Souvenir Shop

- The name Ekta Mall symbolizes unity in diversity, a hallmark of Indian culture
- Handicrafts and traditional textile showrooms display art & crafts of various states of India
- A one stop shop for relaxing shopping experience rooted in the vitality and diversity of India's traditional textiles and artisanal handicrafts
- Spread across 35000 sq. ft. area, the mall is built in two storey building, 20 emporias has been commissioned and each emporium represents a specific state of India.
- Souvenir shop to carry back several memories of their visit in the form of replica of Statue of Unity, caps, T-shirts, pens, key chains and note books.



18

Khalwani Eco Tourism–A Serene Break

- Khalwani Eco Tourism site is located near Dyke – 4, along the bank of perennial stream fed by the waters released from the Godbole Gate.
- The area is surrounded by hillocks bearing typical deciduous forests of this area.
- The chirping birds, the flowering waters of Narmada, the undulating terrain and the various shades of green foliage makes this place ideal for camping and hiking.
- There are several activities that a tourist can do and enjoy at this place such as bird watching, watching the flying jewels – Butterflies, tree walk and cycling.
- Visitors can also acquaint themselves to the tribal culture by tasting tribal tea / herbal kava, juices from local fruits like Jamun, Amla, Imli, and Mango etc. along with authentic tribal food.
- Visitors here can also get a firsthand knowledge of apiary, poultry, archery, pottery and painting using herbal colour.



19

Shoolpaneshwar Temple – A Sacred Space

- The ancient Shoolpaneshwar Temple was situated near Mokhdi Village, which submerged in the River Narmada
- The present Shoolpaneshwar Temple is in Gora Village on the banks of Narmada River
- There is a stone inscription in the Shoolpaneshwar temple, which states that the renovation of this temple was undertaken during the reign of Vindhyacaladhipati king Rajasimha in the year samvat 1829 saka 1695 i.e. c. 1772 CE.
- The place is worth visiting for its religious and historical aspects.



20

Nilkanthdham Swaminarayan Temple, Poicha

- Nilkanth Dham is one of the beautiful constructions established on the land of Poicha, approximately 40 km away from Statue of Unity site
- It is dedicated to Lord Swaminarayan and is constructed at the river bank of sacred River Narmada
- The Dham has many sectors such as exhibition zone, kids play zone, the park zone, food court and many other zone.
- The Dham looks spectacular in the evenings especially the light show grabs the crowd.

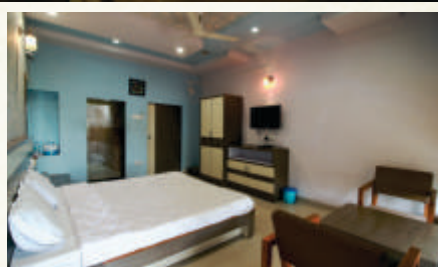


Collect Moments Not Things





TORAN HOTELS



Hotel Champaner - Pavagadh

Key Attractions

Comfortable Stay Options | Warm Hospitality
Authentic Gujarati Food | Reasonable Rates

Contact for Booking:

Phone: +91 2676 245667 | Mobile: +91 99091 16812
Email: toranhotelpavagadh@gujarattourism.com | www.booking.gujarattourism.com

Mt. Abu ■ Ahmedabad ■ Saputara ■ Dwarka ■ Junagadh ■ Porbandar ■ Palitana
Vadnagar ■ Vanz (Surat) ■ Matwad (Navsari) ■ Narayan Sarovar ■ Dhordo (Kutch)

Gujarat Homestays

When in Gujarat, be a Gujarati



- Comfortable, world-class homestay facilities to the tourists
- Selection of homes based on thorough scrutiny and inspection
- Issue of certificate upon registration by Gujarat Tourism
- Categorization of the establishment as Silver or Gold category
- Additional income and enjoyable business activity for home owners
- Payment by tourists towards boarding and lodging services
- Timely and need-based inspection to ensure comfort, hygiene and safety



Toll Free Number: 1800 200 5080 | E-Mail: info@gujarattourism.com | www.gujarattourism.com